



Specified nonprofit corporation

Immigration Lawyer Association Incorporated.

# 入国管理国際法務協会

## ◆ Immigration-related ◆

Permanent residence permit, study abroad qualifications outside activities  
Extension of period of stay, change, acquisition  
Re-entry, qualification certification  
Residence card, passport  
Special permission to stay, etc.

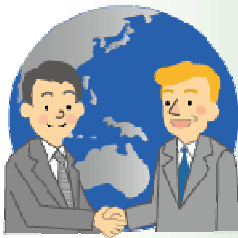
Immigration expert Intermediary will respond to consultation

Except for the special case

No need for personal appearance to Immigration Bureau

## ◆ Public relations related to domestic duties ◆

Acquisition of nationality, recovery, naturalization  
International marriage, divorce, marriage requirements  
Adoption, recognition  
Change custody, visitation  
Inheritance, testament  
Company formation  
Industrial waste permit, etc.



Specialized workers  
for the various problem-solving  
**Please consult**



## ◆ Social life related ◆

Foreign driver's license switching  
National Health Insurance, health insurance, pension  
Real estate purchase, lease  
Traffic accident, insurance  
Employment insurance, work-related injury insurance  
Personal bankruptcy  
School education, etc.

## ◆ Family life related ◆

Tax, tax return  
Consumer trouble  
Neighbor trouble  
Moving House, college, employment  
Hospital Admission/discharge, medical  
Banking and automobile purchase  
Bulky waste and recycling, etc.

本部 〒432-8018 Shizuoka-ken, Hamamatsu-shi, Naka-ku, Shijimizuka, 3-18-33

TEL : **053-456-0151**

FAX : **053-458-0249**

URL : <http://www.ilai.jp>

E-mail : [info@ilai.jp](mailto:info@ilai.jp)



English : **090-3853-0904**

(英語)

Reception office